

NICHEBERLIN.DE



NETFLIX

Group of 50 | 3 hours

Four parallel three-hour art and architecture tours close to the conference location Hotel de Rome - including talks with emerging artists such as Fabian Knecht, Despina Stokou, Tilman Wendland and Ignacio Uriarte as well as appointments with the curators of selected exhibitions.



SENATE DEPARTMENT FOR ECONOMY, TECHNOLOGY & RESEARCH

Group of 30 | 3 hours | + shuttle-service

Two three-hour art and design tours on the young Berlin creative scene around the transit road Leipziger Strasse in the context of the conference of ministers - including appointments with designers and art dealers.



YOUNG PRESIDENTS ORGANIZATION

Group of 100 | 3 hours | + catering

Six parallel three-hour art and architecture tours for international CEOs in six different districts - each including a talk with an artist and an architect and topped off with champagne receptions at Boros Bunker, Pauly Saal and Café Bravo.



HRTB ARCHITECTS

Group of 25 | 2 days | + shuttle-service & catering

Two-day expert tour for Norwegian architects concerning iconic housing developments such as Hufeisensiedlung by Bruno Taut and post-war Hansaviertel, the latest typologies of urban living and joint construction projects - including numerous exclusive on-site visits.



FONDATION BEYELER

Group of 38 | 3 days

Assistance in planning and execution of an art trip to Berlin by the Friends of Fondation Beyeler - including appointments with museum curators such as Udo Kittelmann, private collectors such as Erika Hoffmann, and studio visits with internationally renowned artists such as Olafur Eliasson.



ESTP - ARTS ET METIERS PARIS TECH

Group of 20 | 3 hours

Three-hour expert tour for French master students during their fieldtrip on sustainable architecture to Berlin with a focus on passive house standards in residential buildings and constructions in wood and clay - including an exclusive visit of architectural office Kaden & Partner.



STANFORD UNIVERSITY

Group of 15 | 3 hours

Three-hour art tour for American bachelor students on the young Berlin art scene and its conversions of industrial buildings - including a studio visit with Adrian Lohmüller who has his studio next to the exciting Uferhallen-complex and the preview of a crematorium undergoing conversion.



SOHO HOUSE BERLIN

Group of 15 | 3 hours

Exclusive three-hour ramble for club members to the Cold War relic Teufelsberg (normally closed to the public) with explanations of the architecture of this derelict communication intercept point, its construction history and an evaluation in terms of historic preservation.



C'M'S' ASSOCIATES-CONFERENCE

5 children | 4 hours | + catering

A four-hour sculpture workshop for children and teenagers with artist Dirk Bell for the families of the associates of C'M'S'-law office during their annual convention in Berlin - including individual plaster casts of hands for the kids to take home.

BECKMANN GERKE
HEINEVETTER UG
(HAFTUNGSBESCHRÄNKT)

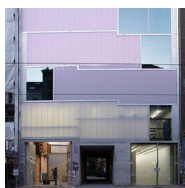
CONTACT @
NICHEBERLIN.DE

WWW.NICHEBERLIN.DE

RHEINSBERGER
STRASSE 68
10115 BERLIN

BERLINER VOLKSBANK EG
BIC: BEVODEBB
IBAN: DE45100900002364530008

TAX ID 37/195/21488
VAT N°: DE282637623



CUTTING-EDGE ARCHITECTURE (MITTE)

Challenging sites lead to astonishingly creative new building projects that make Berlin so distinctive. The latest buildings have truly been fought for by the architects themselves, such as a concrete/polycarbonate studio house built by Brandlhuber+, the Strelitzer townhouses by architects FAT Koehl and Jörg Ebers and a concrete-sculpture by Bundschuh Architects.



INDUSTRIAL ARCHITECTURE & CONVERSIONS (WEDDING)

Abandoned premises trigger spectacular conversions that Berlin is famous for, like the 1930s crematorium now used by Ebensperger Gallery, the outstanding former printing premises of ExRotaprint now appropriated by cultural workers, and the turn-of-the-century tram garage Uferhallen containing plenty of artist studios and workshops.



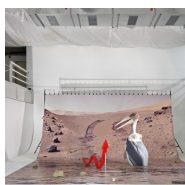
SUSTAINABLE ARCHITECTURE (MITTE/PRENZLAUER BERG)

Sustainable pioneer projects from private and public initiatives have set a new tone, from urban gardening project Prinzessingärten, to residential timber-frame building by Kaden + Klingbeil, as well as the clay chapel by Peter Sassenroth and Rudolf Reitermann and the low energy headquarter of Heinrich Böll Foundation by E2A.



NEW ART IN FORMER RED LIGHT DISTRICT

The art scene in former red-light district Kurfürstenstraße has become even more interesting with the influx of new venues such as off-site space Eden Eden by Isabella Bortolozzi, specialty book dealer Udolpho and the new Sandy Brown gallery, that complement the pioneers Tanya Leighton, Société or Supportico Lopez - young galleries with visionary programs.



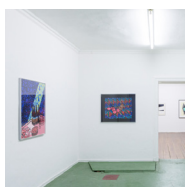
SURPRISING GALLERY FORMATS AROUND ALEXANDERPLATZ

The art scene next to Alexanderplatz is surprisingly offbeat with galleries such as Kraupa-Tuskany Zeidler, hiding their gallery in the server room of a 1970's highrise, BQ, presenting a year-long exhibition, but also irregular non-profit initiatives such as L40 or Bel Etage - all in a history-charged, architectural ensemble, both: pre- and post-war.



UP- AND COMING CREATIVES IN PREFAB SURROUNDING

A young generation of art spaces has taken over the seemingly unaesthetic post-war neighbourhood of Leipziger Straße. Protagonists such as LEAP - Lab for emerging arts and performances, internationally reknown SCHINKEL PAVILLON and AUTOCENTER revive this unlikely neighbourhood of Museum Island with artistic and curatorial experiments.



THE RE-DISCOVERY OF CHARLOTTENBURG

The posh district of Charlottenburg has undergone massive changes and surprises with outstanding discoveries, from re-opened modernist buildings such as Amerika Haus by Bruno Grimmek or Bikini Haus by Schwebes and Schoszberger and great galleries like Mathew or Bucholz to new art spaces such as Between Briges and The Composing Rooms.



ARTISTIC & URBAN ANARCHY IN KREUZBERG

The most punk district of Berlin, Kreuzberg offers an unconventional, eclectic mix of unique buildings, such as collaborative building initiative R50 by Heiss and Fezer or the conversion of Werner Düttman's brutalist St. Agnes church complex, a great, young gallery scene including Chert or PSM, and non-profit venues such as research-based Praxes.

BECKMANN GERKE
HEINEVETTER UG
(HAFTUNGSBESCHRÄNKT)

CONTACT @
NICHEBERLIN.DE

WWW.NICHEBERLIN.DE

RHEINSBERGER
STRASSE 68
10115 BERLIN

BERLINER VOLKSBANK EG
BIC: BEVODEBB
IBAN: DE45100900002364530008

TAX ID 37/195/21488
VAT N°: DE282637623